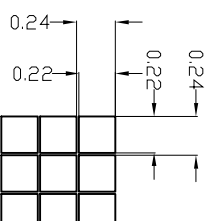
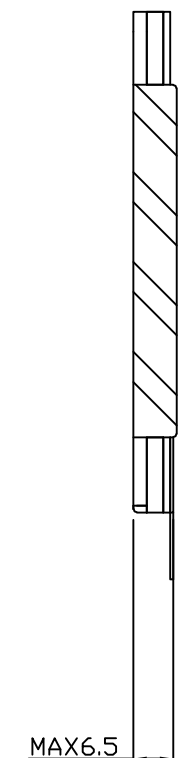
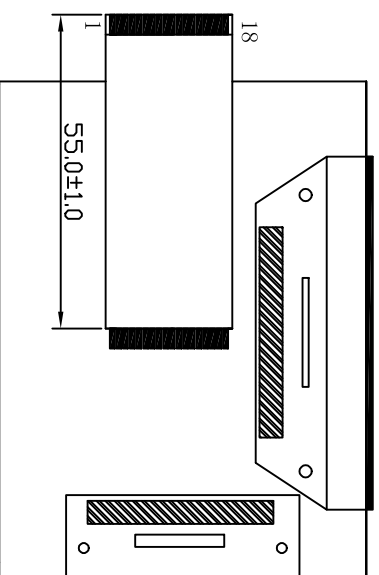
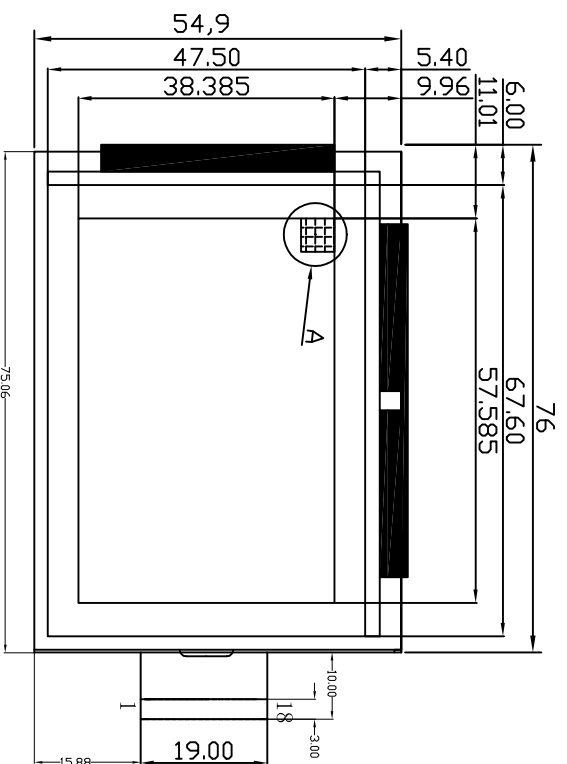


Customer approval :



SPECIFICATION:

- 1). Driving: Dots:240*160, DUTY:1/160, BIAS:1/13,VDD:5.0V,VO:19V.
- 2). Viewing angle: 6 O'CLOCK
- 3). Display mode: STN Yellow-green ;STN Blue ;FSTN
- 4). Operating temp: -20°C~+70°C
- 5). Storage temp: -30°C~+80°C
- 6). Controller IC: NC
- 7). Backlight: White
- 8). Dimensions with mark "*" are important, with mark "(")" are referenced
- 9). All the raw materials are RoHS complicant

PIN	1	2	3	4	5	6	7	8	9	10	11	12	13	14	15	16	17	18
CONNECTION	V5	V2	VO	VDD	FILM	VGND	LP	VSS	M	DISP	CP	V4	V3	D3	D2	D1	D0	BLA

REVISION RECORD		REV
First issue		A0

 深圳市三元鼎科技有限公司 Shenzhen TCC LCD Hi-Tech Co., Ltd.		DRAWING NO.	SYT240160EV10	GENERAL TOL:	± 0.3
APPROVED BY	BYCHECKED BY	DRAWING BY	UNIT:	mm	PAGE
		LAN			1/1
		2013/04/07			